

# Anne Gilman: Subtext

Jan 7, 2019 - Feb 28, 2019 · Online Exclusive

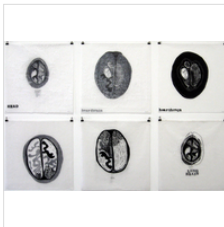


**ANNE GILMAN**

Caution: may get pricked , 2004  
12 drawings with mixed media on handmade paper in handmade portfolio

17 × 14 1/2 in  
43.2 × 36.8 cm

\$9,000

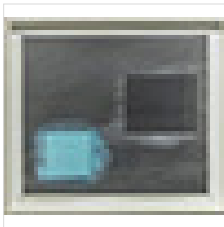


**ANNE GILMAN**

Gibberish: headheartlungbrain, 2006  
Six relief prints with stamping, hand drawing, ink, wax, thread

21 1/2 × 21 3/4 × 1 in  
54.6 × 55.2 × 2.5 cm

\$7,200



**ANNE GILMAN**

Out of the blue, 2016  
Pencil, charcoal, matte medium, acrylic paint on paper

12 × 14 in  
30.5 × 35.6 cm

\$2,200

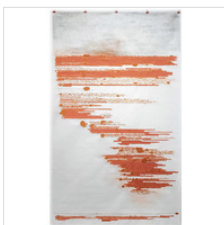


**ANNE GILMAN**

untitled (keyword: circling), 2015  
Collage: pencil, paint, and torn paper collage on 2 layers of hand-stained paper

30 × 30 × 1/2 in  
76.2 × 76.2 × 1.3 cm

\$4,200

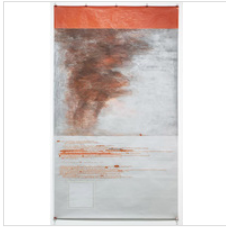


**ANNE GILMAN**

Boiling point, 2018  
Ink, pencil, tape on mulberry paper

46 × 27 in  
116.8 × 68.6 cm

\$6,200



**ANNE GILMAN**  
Boiling point, 2018  
Ink, pencil, tape on mulberry paper

46 × 27 in  
116.8 × 68.6 cm

\$6,200



**ANNE GILMAN**  
A particular kind of quiet , 2017  
Pencil, paint, ink, graphite, tape on paper with hand-stained wood and glass

149 1/2 × 60 × 2 in  
379.7 × 152.4 × 5.1 cm

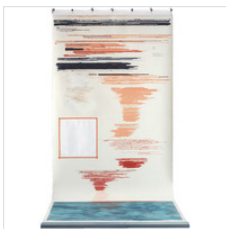
\$9,000



**ANNE GILMAN**  
Up close / in the distance / now, 2018  
Pencil, graphite, tape, ink, BIC ballpoint pen, matte medium on mulberry paper

340 × 38 in  
863.6 × 96.5 cm

\$22,000



**ANNE GILMAN**  
Sundowning , 2018  
Pencil, graphite, paint, tape, ink, on paper with hand-stained wood

134 × 60 in  
340.4 × 152.4 cm

\$18,000